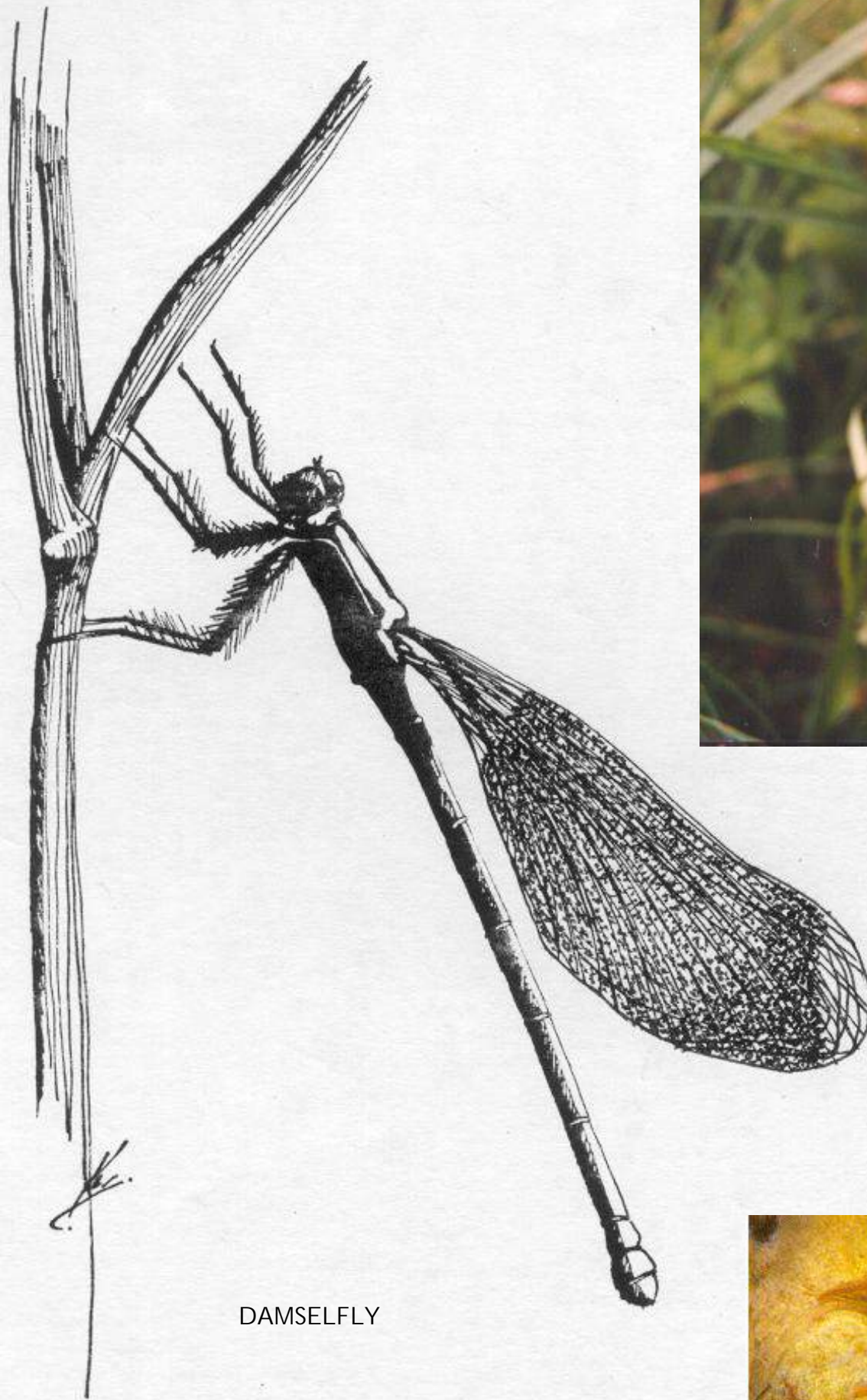


# natural history



HAIRY SEDGE

The river and river valley provide a wide range of habitats: management work needs to be directed at sustaining this diversity without favouring one set of species to the exclusion of others: the general loss of water-meadows and overshadowing of watercourses, and general changes in the management of farmland in the valley present particular challenges in the different world of the twenty-first century. In addition, water quality and flow problems (on the Southern Wey catchment most prevalent on the Slea tributary) have introduced new problems of habitat change and instability; alien introductions, from mink to pondweeds to balsam all pose threats (or the reality) of species loss and require new approaches to management. Nonetheless, the rivers and streams of the Southern Wey catchment still offer a rich and diverse environment for water and wetland flora and fauna



DAMSELFLY



SOUTHERN MARSH ORCHID, LOCALLY COMMON, BUT THREATENED BY OVERGRAZING OR LOSS OF WET MEADOW HABITAT

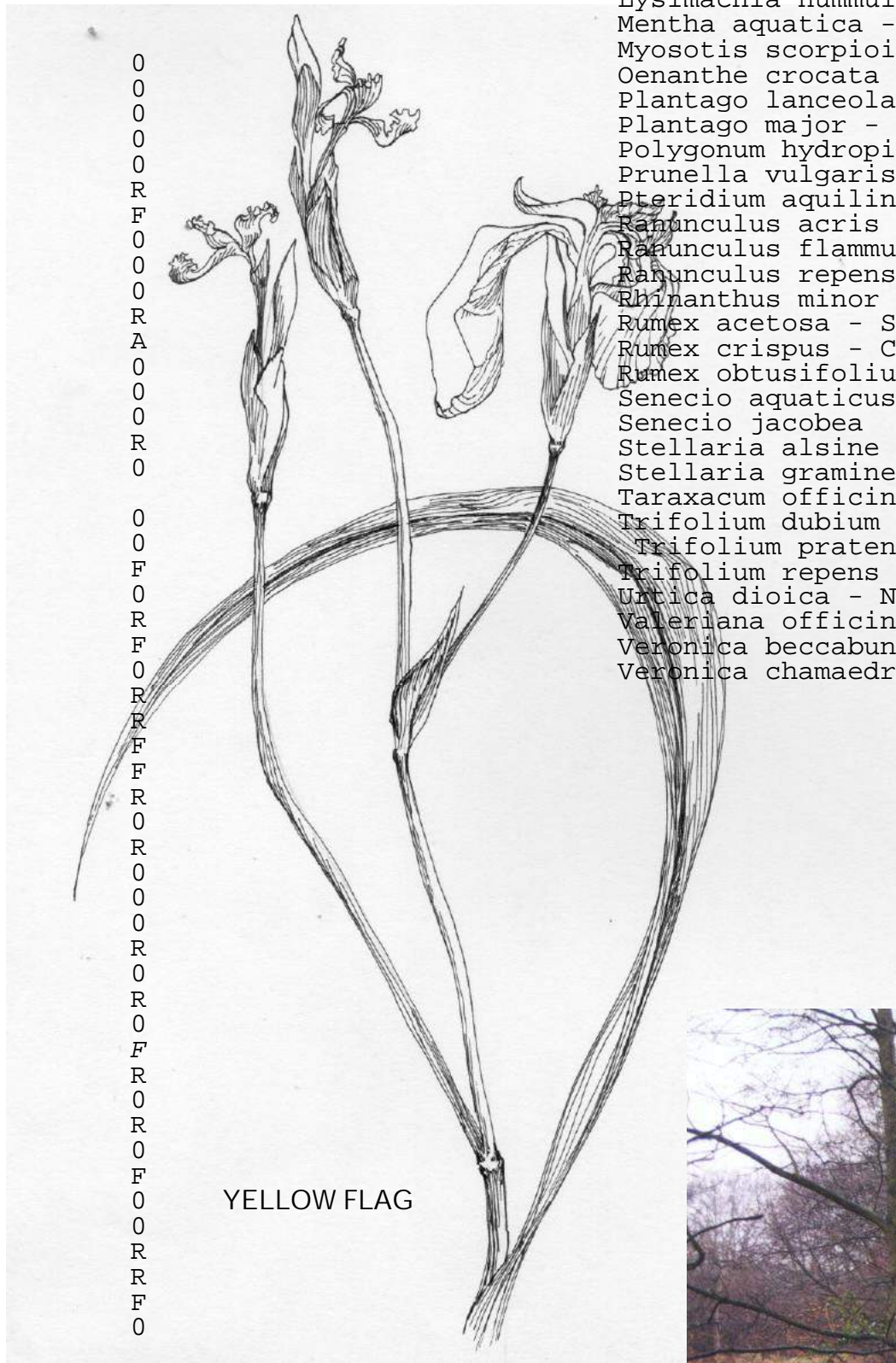
NATIVE CRAYFISH: NOW SURVIVING MOSTLY IN SMALL POCKETS ON THE WEY, OUT-COMPETED AND INFECTED BY ESCAPED COMMERCIALLY REARED AMERICAN CRAYFISH



**MEADOW SPECIES RECORDED FROM HATCH FARM MEADOW 2**

Agrostis capillaris	Common Bent	0
Agrostis stolonifera	Creeping Bent	0
Alopecurus geniculatus	Marsh Foxtail	0
Alopecurus pratensis	Meadow Foxtail	0
Anthoxanthum odoratum	Sweet Vernal Grass	0
Arrhenatherum elatius	False Oat Grass	R
Cynosurus cristatus	Crested Dogstail	F
Dactylis glomerata	Cocksfoot	0
Festuca rubra - Red Fescue		0
Glyceria fluitans	Floating Sweet-grass	0
Glyceria maxima	Reed Sweet-grass	R
Holcus lanatus - Yorkshire Fog		A
Holcus mollis - Creeping Soft Grass		0
Lolium perenne - Perennial Rye Grass		0
Phalaris arundinacea - Reed Canary Grass		0
Phleum pratense	Timothy	R
Poa trivialis	Rough Meadow Grass	0
Achillea millefolium	Yarrow	0
Angelica sylvestris	Angelica	0
Caltha palustris	Marsh Marigold	F
Cardamine flexuosa	Wavy Bittercress	0
Cardamine pratensis	Ladys Smock	R
Carex acutiformis	Lesser Pond Sedge	F
Carex hirta	Hairy Sedge	0
Carex nigra	Black Sedge	R
Carex ovalis - Oval Sedge		R
Centaurea nigra - Black Knapweed		F
Cerastium fontanum - Common Mouse Ear		F
Cirsium arvense - Creeping Thistle		R
Cirsium palustre - Marsh Thistle		0
Cirsium vulgare - Spear Thistle		R
Dactylorhiza praetermissa - Marsh Orchid		0
Eleocharis palustris - Common Spike Rush		0
Epilobium hirsutum - Hairy Willowherb		0
Epilobium palustre - Marsh Willowherb		R
Epilobium parviflorum - Small Willowherb		0
Equisetum arvense - Field Horsetail		0
Equisetum palustre - Marsh Horsetail		0
Filipendula ulmaria - meadowsweet		F
.Galium uliginosum - Fen Bedstraw		R
Glechoma hederacea - Ground Ivy		0
Heracleum sphondylium	Hogweed	R
Hypochaeris radicata	Catsear	0
Juncus acutiflorus	Sharp-flowered Rush	F
Juncus effusus - Soft Rush		0
Lathyrus pratensis	Meadow Vetchling	0
Leontodon autu=alis	Autumnal Hawkbit	R
Leucanthemum vulgare	Ox-eye Daisy	R
Lotus uliginosus - Great Birdsfoot Trefoil		F
Lychnis flos-cuculi	Ragged Robin	0

**PLANT SPECIES LIST FOR A TYPICAL SOUTHERN WEY VALLEY MEADOW – RANGING FROM VERY WET TO FAIRLY DRY (Hatch Farm, Standford)**



YELLOW FLAG

Lysimachia nummularia	Creeping Jenny	R
Mentha aquatica - Water Mint		0
Myosotis scorpioides - Water Forget-me-not		0
Oenanthe crocata - Hemlock Water Dropwort		F
Plantago lanceolata - Ribwort		0
Plantago major - Ratstail		0
Polygonum hydropiper - Biting Water Pepper		R
Prunella vulgaris - Selfheal		0
Pteridium aquilinum - Bracken		R
Ranunculus acris - Meadow Buttercup		P
Ranunculus flammula - Spearwort		R
Ranunculus repens - Creeping Buttercup		F
Rhinanthus minor - Yellow Rattle		0
Rumex acetosa - Sorrel		F
Rumex crispus - Curled Dock		R
Rumex obtusifolius	Broad-leaved Dock	R
Senecio aquaticus	Marsh Ragwort	P
Senecio jacobea	Ragwort	R
Stellaria alsine	Bog Stitchwort	0
Stellaria graminea - Lesser Stitchwort		0
Taraxacum officinale - Dandelion		R
Trifolium dubium - Lesser Trefoil		R
Trifolium pratense - Red Clover		F
Trifolium repens - White Clover		0
Urtica dioica - Nettle		0
Valeriana officinalis	valerian	0
Veronica beccabunga	Brooklime	0
Veronica chamaedrys	Germander speedwell	R

MANAGEMENT OF ALDER WOODLAND, BOTH BANKSIDE AND WITHIN FORMER WATERMEADOW (PASSFIELD): THE ALDER IS COPPED AND ALLOWED TO REGROW FROM THE OLD STOOLS. THIS BOTH INVIGORATES THE TREE (AND AVOIDS STABILITY PROBLEMS) AND – CARRIED OUT IN GROUPS OVER A PERIOD OF YEARS (ROTATION) – IT PROVIDES A RANGE OF HABITATS WITHIN A FAIRLY SMALL AREA

